

REFERENCE PLAN OF PART OF LOT A, PLAN EPP18861 AND PART OF LOT 17, BLOCK 21,
 PLAN 1712, BOTH IN DISTRICT LOT 97G, NEWCASTLE RESERVE, SECTION 1, NANAIMO DISTRICT
 FOR EASEMENT PURPOSES PURSUANT TO SECTION 99(1)(E), LAND TITLE ACT

PLAN EPP18940

BCGS 92G.011

0 2.5 5 10 15 20 25
 The intended plot size of this plan is 432mm in width by 280mm in height, B size, when plotted at a scale of 1:250.

LEGEND

Found Placed

● ○ Standard Iron Post

Sq. M. denotes Square Metres

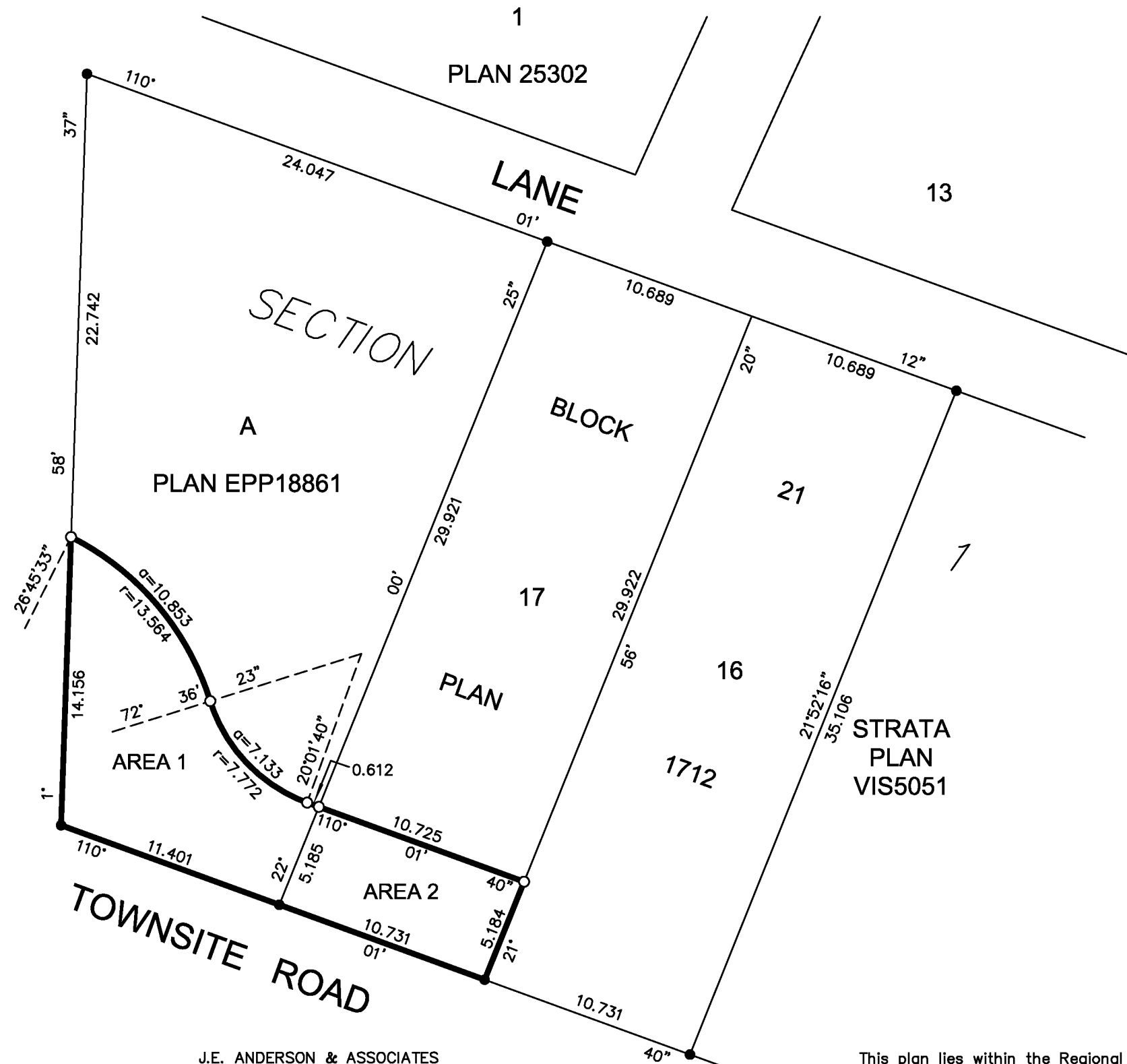
All distances are horizontal ground-level shown in metres

Integrated Survey Area No. 20, Nanaimo, NAD83 (CSRS)

Grid bearings are derived from Plan EPP18861

This plan shows horizontal ground-level distances except where otherwise noted. To compute grid distances multiply ground-level distances by a combined factor of 0.9996500

BOUNDARY AVENUE



BOOK OF REFERENCE		
AREA No.	LOT No.	SIZE
Area 1	Lot A	118.0 Sq. M.
Area 2	Lot 17	55.6 Sq. M.

J.E. ANDERSON & ASSOCIATES
 B.C. Land Surveyors - Consulting Engineers
 Victoria - Nanaimo - Parksville, B.C.
 File: 87483

This plan lies within the Regional District of Nanaimo
 The field survey represented by this plan was completed by
 Douglas W. Holme, B.C.L.S., on the 14th day of March, 2012.